

Serie DTS-48

Load capacity Up to 166 kg/pair

Full extension

Cross section 17,0 x 40,0 mm

Material

Steel (C45E+C)
galvanised
milled airway

DTS-...

one-way extension

DTSB-...

two-way extension

Info:

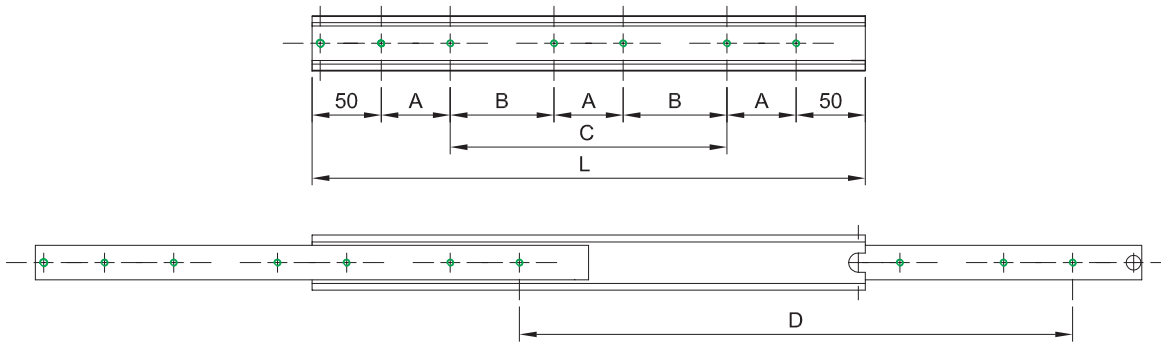
L = Length

TP = Travel path

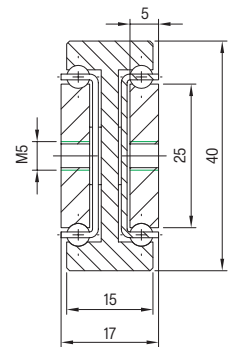
LC = Load capacity at
10,000 cycles

 Drill pattern

DTS-48



SCHOCK
TELESCOPIC SLIDES



Article-Nr. DTS-48	LC in kg 10.000	L mm	TP mm	A mm	B mm	C mm	Weight - kg/piece. DTS-48
07000320001	90	150	150	50	-	-	0,58
07000320002	107	200	200	50	-	-	0,77
07000320003	114	250	250	50	-	50	0,95
07000320004	125	300	300	50	-	100	1,14
07000320005	136	350	350	50	-	150	1,32
07000320006	147	400	400	50	-	200	1,51
07000320007	158	450	450	50	-	250	1,69
07000320008	164	500	500	50	-	300	1,88
07000320009	166	550	550	50	150	-	2,06
07000320010	160	600	600	50	175	-	2,25
07000320011	155	650	650	50	200	-	2,43
07000320012	150	700	700	50	225	-	2,62
07000320013	140	750	750	50	250	-	2,80
07000320014	125	800	800	50	275	-	2,99
07000320015	110	850	850	50	300	-	3,17
07000320016	98	900	900	50	325	-	3,36
07000320017	90	950	950	50	350	-	3,54
07000320018	80	1000	1000	50	375	-	3,73