

Serie DTS-35

Load capacity Up to 120 kg/pair

Full extension

Cross section 18,0 x 35,0 mm

Material

Steel (C45E+C)
galvanised
milled airway

DTS-...

one-way extension

DTSB-...

two-way extension

Info:

L = Length

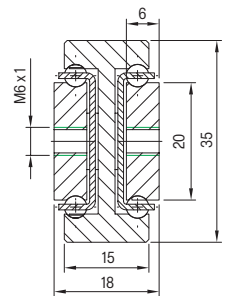
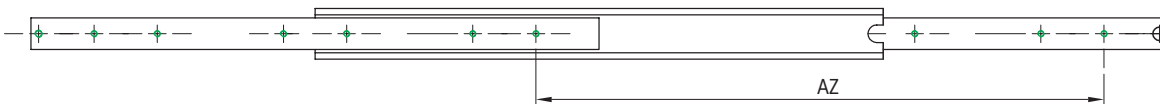
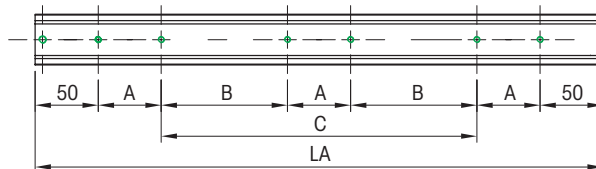
TP = Travel path

LC = Load capacity at
10,000 cycles

 Drill pattern



DTS-35



Article-Nr. DTS-35	LC in kg 10.000	L mm	TP mm	A mm	B mm	C mm	Weight - kg/piece. DTS-35
07000318001	60	150	150	50	-	-	0,51
07000318002	70	200	200	50	-	-	0,68
07000318003	80	250	250	50	-	50	0,85
07000318004	90	300	300	50	-	100	1,02
07000318005	100	350	350	50	-	150	1,19
07000318006	110	400	400	50	-	200	1,36
07000318007	120	450	450	50	-	250	1,53
07000318008	115	500	500	50	-	300	1,70
07000318009	100	550	550	50	150	-	1,87
07000318010	90	600	600	50	175	-	2,04
07000318011	85	650	650	50	200	-	2,21
07000318012	80	700	700	50	225	-	2,38
07000318013	75	750	750	50	250	-	2,55
07000318014	70	800	800	50	275	-	2,72
07000318015	65	850	850	50	300	-	2,89
07000318016	60	900	900	50	325	-	3,06
07000318017	55	950	950	50	350	-	3,23
07000318018	50	1000	1000	50	375	-	3,40